



**DOURAKU SUSHI**

**EXCLUSIVE TO D'ARENA**

# OMAKASE MENU

**HANA | 9-COURSE | LUNCH SPECIAL**



## TUNA TATAKI

Torched bluefin tuna served with ponzu sauce

## PITAN TOFU

Chilled egg tofu in century egg sauce topped with century egg jelly

## SASHIMI PLATTER

3 kinds of premium seasonal sashimi

## SUSHI OF THE DAY

3pcs of assorted sushi

## NEGITORO MAKI

Minced bluefin tuna belly topped with scallions

## ANKAKE TOFU

Deep-fried tofu with minced meat or prawn\* in shoyu broth

*\*Choice of meat or prawn will be determined by Chef, depending on seasonality.*

## YAKITORI

Grilled chicken skewer with teriyaki soy sauce coated with crispy rice

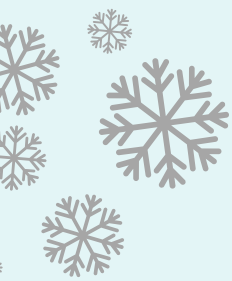
## MINI KAKUNI DON

Slow-braised Iberico pork belly in ginger soy sauce on a bed of Japanese rice and served with Asari clam miso soup

## DESSERT OF THE DAY

**\$68++ per person**

\*FOR DINE-IN AT DOURAKU SUSHI - D'ARENA ONLY. LIMITED SETS ARE AVAILABLE DAILY. RESERVATIONS IS HIGHLY RECOMMENDED. GROSS BILLS WILL BE SUBJECTED TO 10% SERVICE CHARGE AND PREVAILING GOVERNMENT TAXES. NOT VALID IN CONJUNCTION WITH OTHER PROMOTIONAL PROGRAMMES, OFFERS, E-VOUCHERS AND/OR VOUCHERS, DISCOUNT CARDS, PRIVILEGE CARDS OR TUNG LOK MEMBERSHIP PRIVILEGES, UNLESS OTHERWISE STATED. MENU IS SUBJECT TO CHANGE WITHOUT PRIOR NOTICE. GENERAL TERMS AND CONDITIONS APPLY.



DOURAKU SUSHI

EXCLUSIVE TO D'ARENA

# OMAKASE MENU

YUKI | 10-COURSE | DINNER SPECIAL



## TUNA TATAKI

Torched bluefin tuna served with ponzu sauce

## PITAN TOFU

Chilled egg tofu in century egg sauce topped with century egg jelly

## IKA GESO KARAAGE

Deep-fried squid tentacles with truffle paste

## SASHIMI PLATTER

3 kinds of premium seasonal sashimi

## SUSHI OF THE DAY

3pcs of assorted sushi

## NEGITORO MAKI

Minced bluefin tuna belly topped with scallions

## UNAGI TOFU

Deep-fried crispy tofu topped with grilled Japanese eel in shoyu broth

## KAGOSHIMA A4 SAIKORO STEAK

Pan-fried wagyu beef cubes topped with crispy garlic flakes

## MINI BARA CHIRASHI

Assorted diced sashimi on a bed of Japanese rice served with Asari clam miso soup

## DESSERT OF THE DAY



**\$88++ per person**

\*FOR DINE-IN AT DOURAKU SUSHI - D'ARENA ONLY. LIMITED SETS ARE AVAILABLE DAILY. RESERVATIONS IS HIGHLY RECOMMENDED. GROSS BILLS WILL BE SUBJECT TO 10% SERVICE CHARGE AND PREVAILING GOVERNMENT TAXES. NOT VALID IN CONJUNCTION WITH OTHER PROMOTIONAL PROGRAMMES, OFFERS, E-VOUCHERS AND/OR VOUCHERS, DISCOUNT CARDS, PRIVILEGE CARDS OR TUNG LOK MEMBERSHIP PRIVILEGES, UNLESS OTHERWISE STATED. MENU IS SUBJECT TO CHANGE WITHOUT PRIOR NOTICE. GENERAL TERMS AND CONDITIONS APPLY.